


		FIT EVALUATION SPEC PAGE						
BUYER			DATE: 3/20/24 (RESEND)					
SEASON: FA 2024			FIT APPROVAL STATUS: REQ 2ND PPS					
STYLE # 466-MOF4260			SAMPLE FIT SIZE: M					
DESCRIPTION: BRAWNY CANVAS JKT			CUT DATE: 5/4/24					
TD: Lancy Lim			SHIP DATE: WORK WITH PD					
		SIZE RANGE: S / M / XL / XXL						
			6/1/2023	3/5 dk olive	3/11. dk olive	3/11	3/18	3/18
CODE	POINT of MEASUREMENT CIRCUNFERENCE	TOL.	FINAL (M)	FTY (M)	FC (M)	diff	revised	2ND PPS (M)
后中长	BACK BODY LENGTH (from CB Neck Seam TO Bottom shirt tail)	1/4	29 1/2	1/4	1/4	1/4		29 1/2
前身長	FRONT BODY LENGTH (from HPS)	1/4	30 1/2	-	-	-		30 1/2
衬衣下摆高	SHIRT TAIL HEIGHT (FROM SIDE SEAM TO CF/CB)	1/8	1	-	-	-		1
肩斜	SHOULDER SLOPE	1/8	2	-	-	-		2
借肩	FORWARD SHOULDER SEAM	1/8		1 1/2	1 1/2	-		1 1/2
胸围	CHEST CIRCUMFERENCE (1" below ARMHOLE)	1/2	48	1/2	48 1/2	1/2	BTS	48
下摆	SWEEP RELAXED	1/2	47	1/2	47 1/2	1/2	BTS	47
肩宽	ACROSS SHOULDER	1/4	19 1/2	-	-	-		19 1/2
后背	ACROSS BACK (7" below HPS)	1/4	19	-	-	-		19
前胸	ACROSS CHEST (7" below HPS)	1/4	18	-	-	-		18
前育克	FRONT YOKE FROM HPS	1/4	7 1/2	-	-	-		7 1/2
后约克	BACK YOKE FROM CB NECK	1/4	4	-	-	-		4
下摆高	BOTTOM HEM HEIGHT	1/8	3/4	-	-	-		3/4
门襟宽	CF PLACKET WIDTH	1/8	1 1/2	-	-	-		1 1/2
	CF SNAPS PLACEMENTS							
第一颗纽扣距领缝	1ST FROM NECK SEAM	1/8	3 3/4	-	-	-		3 3/4
最后一颗纽扣距下摆	LAST SNAP POSITION FROM HEM	1/8	5 1/2	-	-	-		5 1/2
其余纽扣间距自己调整	REST OF THE SNAP SPACE	1/8	4 3/8	-	-	-		4 3/8
袖长	SLEEVE LENGTH (from CB NECK)	3/8	36	1/4	36 1/4	1/4	BTS	36
袖笼	ARMHOLE CIRCUMFERENCE	3/8	23 1/2	1/4	23 3/4	1/4	BTS	23 1/2
袖肥	MUSCLE CIRCUMFERENCE (1" below ARMHOLE)	1/4	19 1/2	-	19 1/2	-		19 1/2
后肘	ELBOW - 12" UP FROM CUFF EDGE	1/4	16 1/2	-	16 1/2	-		16 1/2
前臂	FOREARM - 6" UP FROM CUFF EDGE	1/4	13 1/4	-	13 1/4	-		13 1/4
克夫开口	CUFF OPENING @ 1ST BUTTON	1/8	10	-	10	-		10

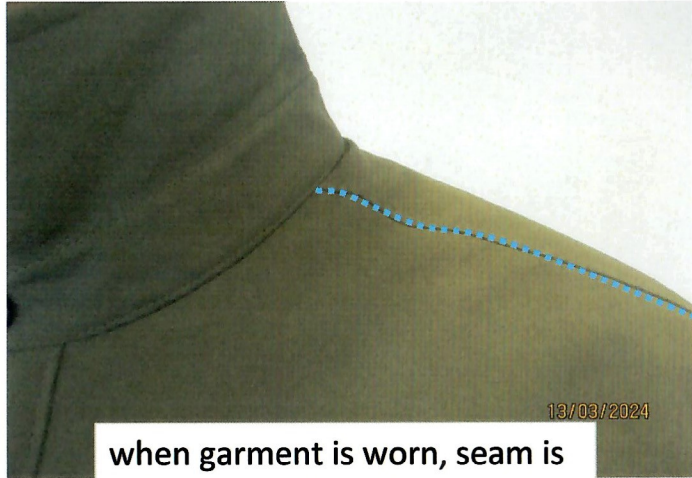
克夫开口	CUFF OPENING @ 2ND BUTTON	1/8	9	-	9	-	9
克夫高	CUFF HEIGHT	1/8	2 1/4	-	2 1/4	-	2 1/4
克夫袷长	CUFF PLACKET LENGTH (INCL 3/4" X 1 BOX DESIGN DETAIL)	1/8	5 1/2	-	5 1/2	-	5 1/2
克夫袷宽	CUFF PLACKET WIDTH	1/8	1	-	1	-	1
领宽	NECK WIDTH (from HPS to HPS)	1/8	7 3/4	-	7 3/4	-	7 3/4
上领围	COLLAR LENGTH AT TOP EDGE - STRAIGHT	1/4	19 1/2	1/4	19 1/2	-	19 1/2
	NECK CIRC - CETNER OF SNAP TO SNAP	1/4	N/A	N/A	19	-	19 1/4
前领深	FRONT NECK DROP (from HPS to IMAGINARY LINE)	1/8	4	-	4	-	4
后领深	BACK NECK DROP (from HPS to IMAGINARY LINE)	1/8	1	-	1	-	1
后领高	COLLAR HEIGHT @ CB	1/8	2 1/2	-	2 1/2	-	2 1/2
领座高后领	COLLAR BAND @ CB	1/8	1 1/4	-	1 1/4	-	1 1/4
前尖	COLLAR POINT AT CF (ROUND SHAPE)	1/8	2 1/2	-	2 1/2	-	2 1/2
领尖距	COLLAR SPREAD	1/8	3 3/4	-	3 3/4	-	3 3/4
上端口袋宽	RIGHT CHEST PATCH POCKETS:						
下端口袋宽	WIDTH AT TOP	1/8	7	-	7	-	7
口袋开口-套结到套结	WIDTH AT BOTTOM	1/8	7 1/4	-	7 1/4	-	7 1/4
在前中处口袋长	CHEST PATCH OPENING: BAR TACK TO BAR TACK	1/8	6	-	6	-	6
胸袋高-上端到下端点处	CHEST PATCH: POCKET TOTAL LENGTH AT CF	1/8	7 3/4	-	7 3/4	-	7 3/4
胸袋宽	CHEST PATCH LENGTH (TOP TO POINT)	1/8	8 1/2	-	8 1/2	-	8 1/2
	CHEST PATCH LENGTH (SIDE A/H)	1/8	7 1/4	-	7 1/4	-	7 1/4
口袋距前中	CHEST POCKET: POSITION FROM CF	1/8	2	-	2	-	2
缝边宽度	CHEST POCKET: STITCH WELT WIDTH	1/8	1	-	1	-	1
胸口袋-穿起左侧-拉链长	LEFT CHEST ZIPPER POCKET: ZIPPER LENGTH	1/8	6 3/4	-	6 3/4	-	6 3/4
拉链宽	CHEST POCKET: ZIPPER WIDTH	1/8	3/8	+1/8	1/2	+1/8	3/8
拉链距胸袋尾部	CHEST POCKET: ZIPPER PLCMNT FROM PATCH EDGE	1/8	7/8	-	7/8	-	7/8
插袋长度开口	LOWER WELT POCKETS - LENGTH OPENING	1/8	7 3/4	-	7 3/4	-	7 3/4
切线长	STITCH LENGTH (OUTSIDE)	1/8	7	-	7	-	7
宽	STITCH WIDTH (OUTSIDE)	1/8	3/4	-	3/4	-	3/4
距下摆	PLCMNT FROM HEM EDGE	1/8	2 3/4	-	2 3/4	-	2 3/4
下摆标位置	WOVEN OUTER LABEL:						
距侧缝	FROM SIDE PANEL SEAM	1/8	1 1/2	-	1 1/2	-	1 1/2
距下摆	FROM BOTTOM HEM (on outer patch edge)	1/8	1 5/8	-	1 5/8	-	1 5/8

This design package and all of its content is Confidential Information of Free Country Ltd. It may only be used and disclosed by authorized individuals as is necessary to perform the business of Free Country. Disclosing, divulging or communicating, directly or indirectly this Confidential Information in any format or medium to any other person or entity without the express written permission of Free Country is strictly prohibited, unless otherwise obligated by law.

SPECIFICATIONS REFLECT THE FINISHED GARMENT YIELD. SHRINKAGE ALLOWANCE HAS BEEN BUILT INTO THE MEASUREMENT.

2/6/24 (lancy)

* submit pps in approved bulk fabrics/trim using Fa 23 approved sloper / block 466-MOF3260



when garment is worn, seam is falling towards back



when snaps are un fastened, shoulder seam is totally falling towards back as back armhole lacks of curve

FIT DATE: 3/13/24
SENT DATE: 3/18/24
ATTENDANCE: SASHI, DIONNE, TIA
TD: LANCY
SAMPLE: 1ST PPS WITH PATTERN / SPEC

STATUS: REQUEST 2ND PPS WITH PATTERN / SPEC PAGE

A) DESIGN COMMENTS

1) similar callout as 154-MOF4282

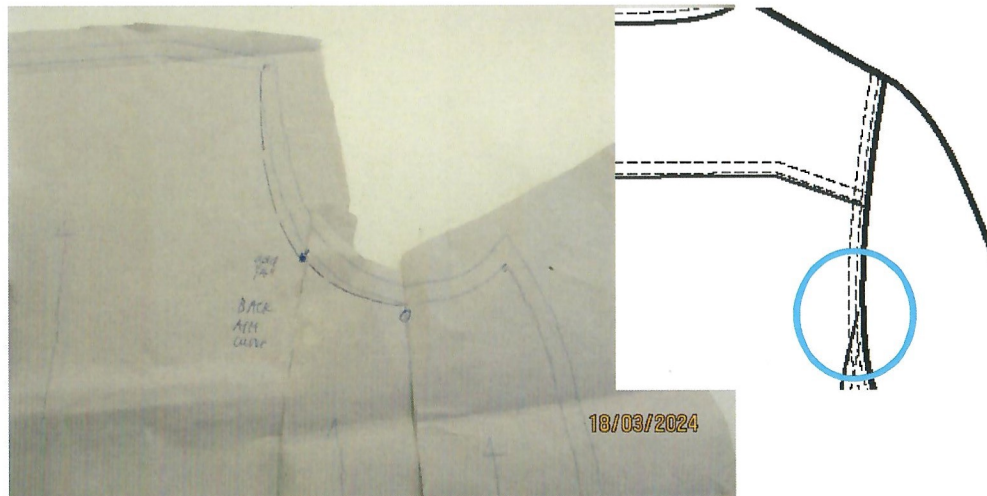
B) MEASUREMENT REVISION:

1) please improve spec

C) PATTERN CORRECTIONS

- 1) armhole curve at body - see image garment is falling backward as back armhole needs curve. see front and back
- 2) armhole shape on sleeve pattern adjust accordingly to meet the revision needed on body

note: please submit all components that I can lay together



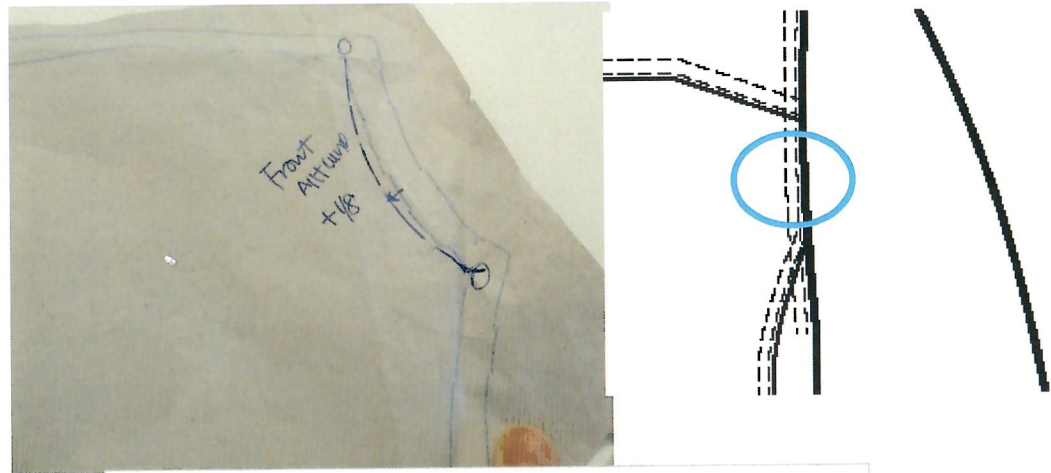
(B - 1) - BACK A/H CURVE @ Joint Seam
*scoop out / adds at-least 1/4", blend into 0" at yoke seam and underarm joint seam



D) CONSTRUCTION AND OTHERS

- 1) Maintain as PPS
- 2) All pocket bags are finished into stitches or joint seams

thank you



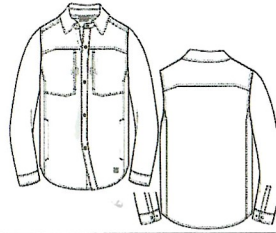
(B -1) FRONT A/H CURVE

* scoop out / adds at-least 1/8" , blend into 0" at yoke seam and underarm joint seam



FREE COUNTRY

FIT EVALUATION SPEC PAGE



DATE: 4/17

FIT APPROVAL STATUS: FC FIT IS APPROVED, NEEDS BODY M-UP

SAMPLE FIT SIZE: M

CUT DATE: 5/10/24

SHIP DATE: WORK WITH PD

SIZE RANGE: S / M / XL / XXL

BUYER: SEE PO'S
 SEASON: FA 2024
 STYLE # 466-MOF4260
 DESCRIPTION: BRAWNY CANVAS JKT
 TD: Lancy Lim
 Merchandiser: Lujian @ United

			3/18	4/9 fudge	4/15	4/15	4/17	4/17
CODE	POINT of MEASUREMENT CIRCUNFERENCE	TOL.	2ND PPS (M)	FTY (M)	FC (M)	diff	revised	FINAL (M)
后中长	BACK BODY LENGTH (from CB Neck Seam TO Bottom shirt tail)	1/4	29 1/2	1/4	29 3/4	1/4		29 1/2
前身長	FRONT BODY LENGTH (from HPS)	1/4	30 1/2	-	30 1/2	-		30 1/2
衬衣下摆高	SHIRT TAIL HEIGHT (FROM SIDE SEAM TO CF/CB)	1/8	1	-	1	-		1
肩斜	SHOULDER SLOPE	1/8	2	-	2	-		2
借肩	FORWARD SHOULDER SEAM	1/8	1 1/2	-	1 1/2	-		1 1/2
胸围	CHEST CIRCUMFERENCE (1" below ARMHOLE)	1/2	48	1/4	48 1/4	1/4	BTS	48
下摆	SWEEP RELAXED	1/2	47	-	47	-	BTS	47
肩宽	ACROSS SHOULDER	1/4	19 1/2	1/8	19 1/2	-	see cmmt	19 1/2
后背	ACROSS BACK (7" below HPS)	1/4	19	- 1/8	19	-		19
前胸	ACROSS CHEST (7" below HPS)	1/4	18	-	18	-		18
前育克	FRONT YOKE FROM HPS	1/4	7 1/2	-	7 1/2	-		7 1/2
后约克	BACK YOKE FROM CB NECK	1/4	4	-	4	-		4
下摆高	BOTTOM HEM HEIGHT	1/8	3/4	-	3/4	-		3/4
门襟宽	CF PLACKET WIDTH	1/8	1 1/2	-	1 1/2	-		1 1/2
	CF SNAPS PLACEMENTS							
第一颗纽扣距领缝	1ST FROM NECK SEAM	1/8	3 3/4	-	3 3/4	-		3 3/4
最后一颗纽扣距下摆	LAST SNAP POSITION FROM HEM	1/8	5 1/2	-	5 1/2	-		5 1/2
其余纽扣间距自己调整	REST OF THE SNAP SPACE	1/8	4 3/8	-	4 3/8	-		4 3/8
袖长	SLEEVE LENGTH (from CB NECK)	3/8	36	1/4	36 1/4	1/4	BTS	36
袖笼	ARMHOLE CIRCUMFERENCE	3/8	23 1/2	1/4	23 3/4	1/4	BTS	23 1/2
袖肥	MUSCLE CIRCUMFERENCE (1" below ARMHOLE)	1/4	19 1/2	-	19 1/2	-		19 1/2
后肘	ELBOW - 12" UP FROM CUFF EDGE	1/4	16 1/2	1/4	16 3/4	-		16 1/2
前臂	FOREARM - 6" UP FROM CUFF EDGE	1/4	13 1/4	-	13 1/4	-		13 1/4
克夫开口	CUFF OPENING @ 1ST BUTTON	1/8	10	-	10	-		10

克夫开口	CUFF OPENING @ 2ND BUTTON	1/8	9	-	9	-		9
克夫高	CUFF HEIGHT	1/8	2 1/4	-1/16	2 3/16	-1/16		2 1/4
克夫祥长	CUFF PLACKET LENGTH (INCL 3/4" X 1 BOX DESIGN DETAIL)	1/8	5 1/2	-	5 1/2	-		5 1/2
克夫祥宽	CUFF PLACKET WIDTH	1/8	1	-	1	-		1
领宽	NECK WIDTH (from HPS to HPS)	1/8	7 3/4	-	7 3/4	-		7 3/4
上领围	COLLAR LENGTH AT TOP EDGE - STRAIGHT	1/4	19 1/2	-	19 1/2	-		19 1/2
	NECK CIRC - CENTER OF SNAP TO SNAP	1/4	19 1/4	- 1/4	19	- 1/4		19 1/4
前领深	FRONT NECK DROP (from HPS to IMAGINARY LINE)	1/8	4	-	4	-		4
后领深	BACK NECK DROP (from HPS to IMAGINARY LINE)	1/8	1	-	1	-		1
后领高	COLLAR HEIGHT @ CB	1/8	2 1/2	-	2 1/2	-		2 1/2
领座高后领	COLLAR BAND @ CB	1/8	1 1/4	-	1 1/4	-		1 1/4
ADDED	COLLAR BAND @ CF	0	N/A	-	1			1
前尖	COLLAR POINT AT CF (ROUND SHAPE)	1/8	2 1/2	-	2 1/2	-		2 1/2
领尖距	COLLAR SPREAD	1/8	3 3/4	-	3 3/4	-		3 3/4
上端口袋宽	RIGHT CHEST PATCH POCKETS:							
下端口袋宽	WIDTH AT TOP	1/8	7	-	7	-		7
口袋开口-套结到套结	WIDTH AT BOTTOM	1/8	7 1/4	-	7 1/4	-		7 1/4
在前中处口袋长	CHEST PATCH OPENING: BAR TACK TO BAR TACK	1/8	6	-	6	-		6
胸袋高-上端到下端点处	CHEST PATCH: POCKET TOTAL LENGTH AT CF	1/8	7 3/4	-	7 3/4	-		7 3/4
胸袋宽	CHEST PATCH LENGTH (TOP TO POINT)	1/8	8 1/2	-	8 1/2	-		8 1/2
	CHEST PATCH LENGTH (SIDE A/H)	1/8	7 1/4	-	7 1/4	-		7 1/4
口袋距前中	CHEST POCKET: POSITION FROM CF	1/8	2	-	2	-		2
缝边宽度	CHEST POCKET: STITCH WELT WIDTH	1/8	1	-	1	-		1
胸口袋-穿起左侧-拉链长 4/15	LEFT CHEST ZIPPER POCKET: ZIPPER LENGTH w/3/8" EXPOSED ZIPPER TAPE	1/8	6 3/4	-	6 3/4	-		6 3/4
拉链距胸袋尾部 4/15	CHEST POCKET: ZIPPER PLCMNT FROM PATCH EDGE TO CENTER OF ZIPPER	1/8	7/8	-	1	-	as smpl 1"	1
插袋长度开口	LOWER WELT POCKETS - LENGTH OPENING	1/8	7 3/4	-	7 3/4	-		7 3/4
切线长	STITCH LENGTH (OUTSIDE)	1/8	7	-	7	-		7
宽	STITCH WIDTH (OUTSIDE)	1/8	3/4	-	3/4	-		3/4
距下摆	PLCMNT FROM HEM EDGE	1/8	2 3/4	-	2 3/4	-		2 3/4
下摆标位置	WOVEN OUTER LABEL:							
距侧缝	FROM SIDE PANEL SEAM	1/8	1 1/2	-	1 1/2	-		1 1/2
距下摆	FROM BOTTOM HEM (on outer patch edge)	1/8	1 5/8	-	1 5/8	-		1 5/8

This design package and all of its content is Confidential Information of Free Country Ltd. It may only be used and disclosed by authorized individuals as is necessary to perform the business of Free Country. Disclosing, divulging or communicating, directly or indirectly this Confidential Information in any format or medium to any other person or entity without the express written permission of Free Country is strictly prohibited, unless otherwise obligated by law.

SPECIFICATIONS REFLECT THE FINISHED GARMENT YIELD. SHRINKAGE ALLOWANCE HAS BEEN BUILT INTO THE MEASUREMENT.

2/6/24 (lancy)

* submit pps in approved bulk fabrics/trim using Fa 23 approved sloper / block 466-MOF3260



(B-2) measuring technique for wr's Left Chest zipper position

FIT DATE: 4/17

SENT DATE: 4/17

ATTENDANCE: DIONNE, TIA

TD: LANCY

SAMPLE: 2ND PPS WITH PATTERN / SPEC PAGE

STATUS: FC FIT IS APPROVED, SUBMIT GRADED NEST AFTER REVIEWING GRADED SPEC

re: POM CROSS SHOULDER - SEE COMMENT ON THE INFORMATION FROM SAMPLE ROOM ON SPEC PAGE

re: m-up prior to 5/10 cut date - please submit a m-up on body panel only (without sleeve/ collar) for lancy's review

A) DESIGN COMMENTS

1) improve Cf scissorring (gapping)

B) MEASUREMENT REVISION:

1) improve POM that came in out of tolerance, especially on BODY length - see image

2) Wr';eft chest zipper pkt position -see image

C) PATTERN CORRECTIONS

1) adjust all call outs at point (B)

2) maintain current armhole saddle/ curve



3) forward shoulder seam - please mark for production

D) CONSTRUCTION AND OTHERS CF PLACKET AT CF HEM

CF and Hem are both separate pieces. Please note:

- *sewing is tight where Placket and Hem Met at Bottom of the placket and CF Hemline.
 - *approximately 5/8" of gapping when I released 3 stitches at the FACED of CF Hem.
 - *please improve and adjust the tension to prevent visible gapping from side view
- see image highlighted in Yellow for 466 & 154

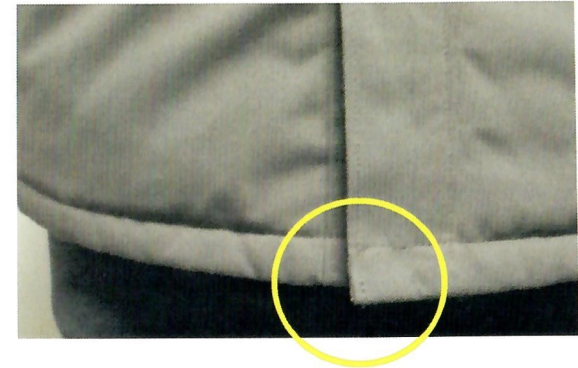
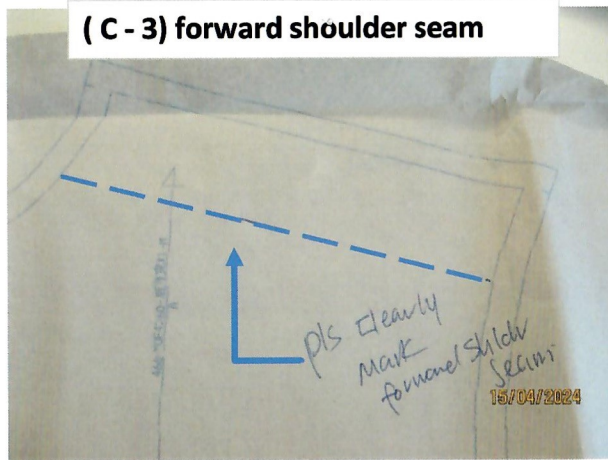
(B-1) hemline balance -
 * need to maintain and control the length

similar call out as 154-
MOF4282
 * gapping at CF Placket / Hem

E) POM - ACROSS SHOULDER

requested spec is 19 1/2",
 Sample Room - wrote 19"
 please confirm this is a typo

thank you



19 1/2	-	-	-	-	✓ 19 1/2	+1/8
19						

訂室	ACROSS SHOULDER	1/4	19 1/2	-	-	-	✓ 19 1/2	+1/8
訂背	ACROSS BACK (7" below HFS)	1/4	19	-	-	-		