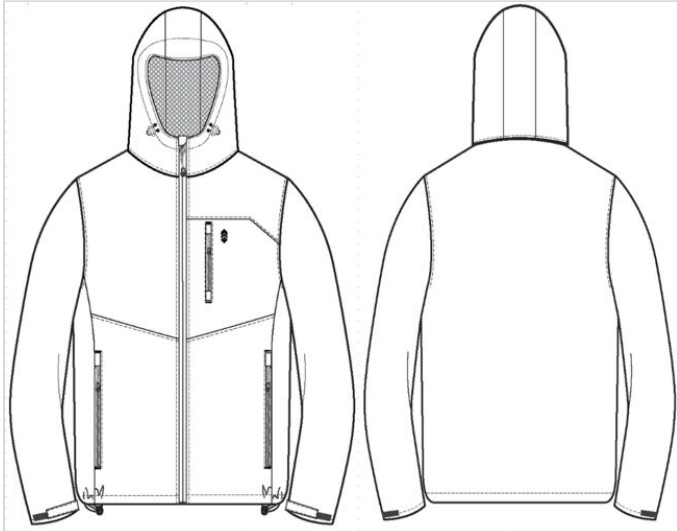


Free Country

212MOS5018

MENS OUTERWEAR

Draft-Sample 9/3/2024, 10:13 AM



MAIN SKETCH

Size Chart	MENS OUTERWEAR
Description	RAIN JACKET WITH ATTACHED HOOD
Pattern	
Tolerance	MEN OUTERWEAR

Size Range	MEN OUTERWEAR
Selected Sizes	S-XXXL
Base Size	M
Grade Rule	MEN OUTERWEAR

POMs

Dim	Description	Tol (-)	Tol (+)	Hide	S	M	L	XL	XXL	XXXL
	BACK BODY LENGTH FROM CBN SEAM	-14	14		28 1/4	28 3/4	29 1/4	29 3/4	30 1/4	30 3/4
	FRONT BODY LENGTH FROM HPS	-3/8	3/8		29	29 1/2	30	30 1/2	31	31 1/2
	SHOULDER SLOPE	-18	18		2	2	2	2	2	2
	SHOULDER SEAM FORWARD @ NECK	A	-18	18	12	12	12	12	12	12
	FORWARD SIDE SEAM WIDTH @ ARMHOLE	-18	18		5/8	5/8	5/8	5/8	5/8	5/8
	CHEST CIRCUMFERENCE @ 1" BELOW ARMHOLE	-12	12		46	48	50	53	56	59
	SWEEP CIRCUMFERENCE	-12	12		44	46	48	51	54	57

Displaying 1 - 8 of 54 results

Units: Fractions of inches Grade Rule Display: Absolute

POMs

Dim	Description	Tol (-)	Tol (+)	Hide	S	M	L	XL	XXL	XXXL
ACROSS SHOULDER		-1/4	1/4		20	20 1/2	21	21 3/4	22 1/2	23 1/4
ACROSS BACK 7" BELOW HPS		-1/4	1/4		19	19 1/2	20	20 3/4	21 1/2	22 1/4
ACROSS FRONT 7" BELOW HPS		-1/4	1/4		18	18 1/2	19	19 3/4	20 1/2	21 1/4
FRONT YOKE HEIGHT FROM HPS TO SEAM		-1/8	1/8		6 3/4	7	7 1/4	7 1/2	7 3/4	8
FRONT BODICE SEAM POSITION FROM HPS TO SEAM		-1/8	1/8		17	17 1/4	17 1/2	17 3/4	18	18 1/4
BOTTOM HEM HEIGHT		-1/8	1/8		1	1	1	1	1	1
WR'S LEFT CHEST HEAT SEALED POSITIONS										
FROM POCKET STITCH		-1/8	1/8		3/4	3/4	3/4	3/4	3/4	3/4
FROM YOKE SEAM TO TOP ICON		-1/8	1/8		3/4	3/4	3/4	3/4	3/4	3/4
		0	0							
INSIDE PLACKET WIDTH		-1/8	1/8		1 1/4	1 1/4	1 1/4	1 1/4	1 1/4	1 1/4
SLEEVE LENGTH FROM CB NECK 3 PT.		-1/4	1/4		35 1/2	36	36 1/2	37	37 1/2	38
ARMHOLE CIRCUMFERENCES (TAPE FLAT ON CURVE)		-1/4	1/4		21	22	23	24	25	26
MUSCLE CIRCUMFERENCE @ 1" BELOW ARMHOLE		-1/4	1/4		18	18 3/4	19 1/2	20 1/4	21	21 3/4
ELBOW 12" UP FROM CUFF EDGE		-1/4	1/4		14 5/8	15 1/4	15 7/8	16 1/2	17 1/8	17 3/4
FOREARM 6" UP FROM CUFF EDGE		-1/4	1/4		12 5/8	13	13 3/8	13 3/4	14 1/8	14 1/2
EA CUFF OPENING WITH TAB ALONG EDGE		-1/8	1/8		10 1/2	10 3/4	11	11 1/4	11 1/2	11 3/4
CUFF TAB LENGTH		-1/8	1/8		4	4	4	4	4	4

Displaying 9 - 28 of 54 results

Units: Fractions of inches Grade Rule Display: Absolute

POMs

Dim	Description	Tol (-)	Tol (+)	Hide	S	M	L	XL	XXL	XXXL
CUFF TAB WIDTH		-18	18		1	1	1	1	1	1
NECK WIDTH (EDGE - EDGE)		-18	18		9	9 1/4	9 1/2	9 3/4	10	10 1/4
FRONT NECK DROP (FROM HPS TO SEAM)		-18	18		4 1/4	4 1/2	4 3/4	5	5 1/4	5 1/2
BACK NECK DROP (FROM HPS TO SEAM)		-18	18		3/4	3/4	3/4	3/4	3/4	3/4
WR'S LEFT CHEST 1/2" ZIPPER TAPE W/ZIPPED PKT										
ZIPPER EXPOSED LENGTH		0	0		7	7	7	7	7	7
POCKET POSITION FROM YOKE SEAM TO STITCH		-14	14		3/4	3/4	3/4	3/4	3/4	3/4
POCKET POSITION FROM CF ZIPPER TP CENTER OF ZIPPER		-18	18		15/8	15/8	15/8	15/8	15/8	15/8
LOWER 1/2" TAPE W/ZIPPED POCKETS										
ZIPPER EXPOSED LENGTH		-18	18		8 1/2	8 1/2	8 1/2	8 1/2	8 1/2	8 1/2
POCKET POSITION @ CENTER: FROM CF ZIPPER TO ZIPPER TAPE		-18	18		7 3/4	8	8 1/4	8 1/2	8 3/4	9
POCKET POSITION FROM BOTTOM EDGE		-18	18		3	3	3	3	3	3
ATTACHED HOOD	C									
HOOD WIDTH @ 4" BELOW TOP (HALF)	C	-14	14		10 1/2	10 3/4	11	11 1/4	11 1/2	11 3/4
HOOD HEIGHT FROM HPS TO TOP	D	-14	14		14 3/4	15	15 1/4	15 1/2	15 3/4	16
HOOD OPENING ALONG CURVE		-14	14		12 1/2	12 3/4	13	13 1/4	13 1/2	13 3/4

Displaying 29 - 48 of 54 results

Units: Fractions of inches Grade Rule Display: Absolute

POMs

Dim	Description	Tol (-)	Tol (+)	Hide	S	M	L	XL	XXL	XXXL
HOOD LENGTH FROM CBN TO CF		-14	14		20	20 1/2	21	21 1/2	22	22 1/2
HOOD CENTER PANEL WIDTH		-18	18		4 1/2	4 1/2	4 1/2	4 1/2	4 1/2	4 1/2
HOOD TUNNEL HEIGHT AT TOP (WITH PEAK)		-18	18		2	2	2	2	2	2
HOOD TUNNEL HEIGHT AT BOTTOM		-18	18		1	1	1	1	1	1
HOOD CHIN HEIGHT @ CF	A	-14	14		4 1/2	4 1/2	4 1/2	4 1/2	4 1/2	4 1/2

Displaying 49 - 54 of 54 results

Units: Fractions of inches Grade Rule Display: Absolute

FIT DATE: 8/21/24

SEND DATE: 8/22/24

ATTENDANCE: DIONNE, SASHI

TD: LANCY

SAMPLE: PPS WITH PATTERN AND SPEC PAGE

STATUS: PPS IS APPROVED WITH BELOW COMMENTS, PRIOR TO GRADED NEST

- 1) First. need to confirm no revision needed on the graded spec
- 2) Second, all finals will be transferred to PLM
- 3) third, graded nest will be submitted and adds to PLM
- 4) QA needs to use the graded spec page for all inline and production audit (without translation in excel format)

A) DESIGN UPDATES

- 1) slight uneven puckering between joint seams. more on yoke seams.

B) MEASUREMENTS UPDATES:

- 1) no revision
- 2) forward shoulder seam - at shoulder /armhole - see image

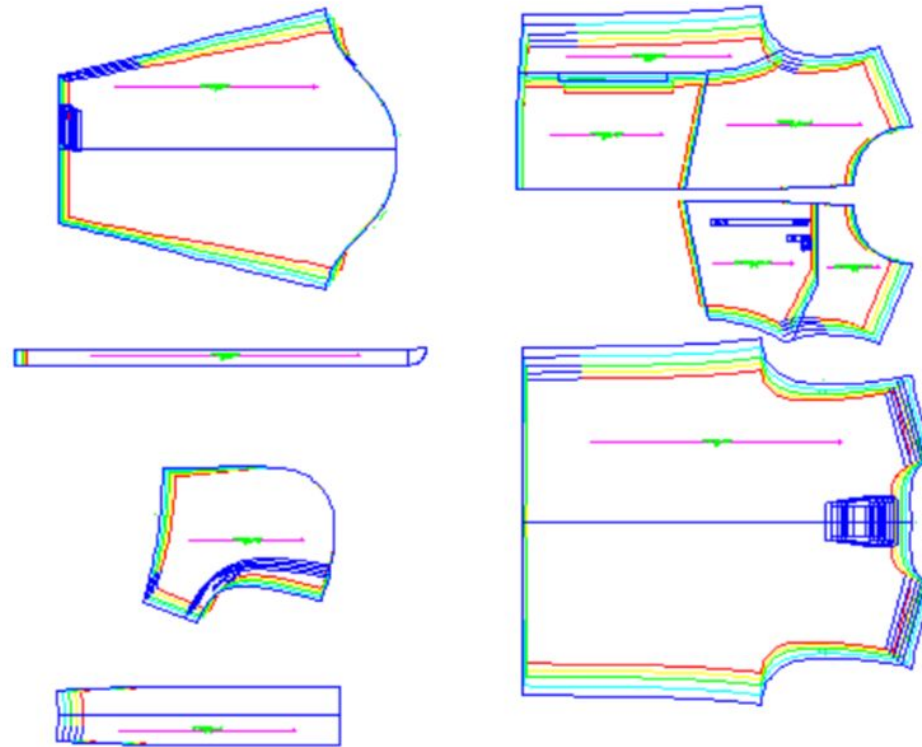
C) PATTERN CORRECTIONS

- 1) adjust and improve all call outs on (A-B)
- 2) armhole saddle shape - see images
- 3) armhole saddle width - see image

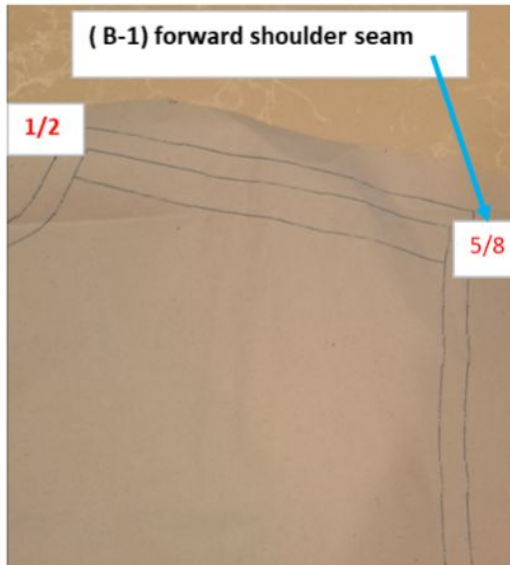
D) CONSTRUCTION AND OTHERS

- 1) maintain 9-10 SPI for fabric 212
- 2) keep even needle tension at all joint seams during sewing (no rushing)
- 3) 1/4" width on all inner bound seams.
- 4) chest pocket bag - finished into joint seams
- 5) lower pocket bags - cleaned finished into all joint seams.

thank you



GRADED NEST SENT AND APPROVED ON 8/29/24



(C-2) slight dragline at front panel under armhole joint seam

(C-2) armhole saddle shape;
*suggests to shift out 1/16", 0" to armhole depth

*needs curve (O) in this area

(C - 3) suggested 5 1/2":
on the shape , shift out
1/16" on each side

